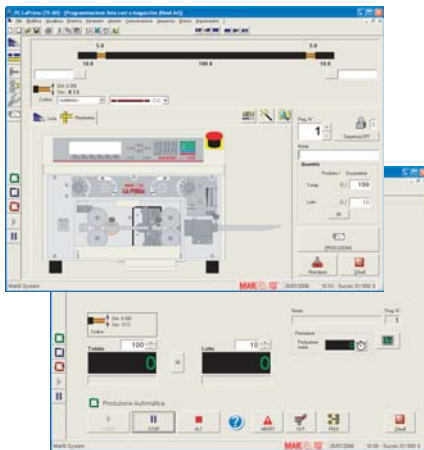
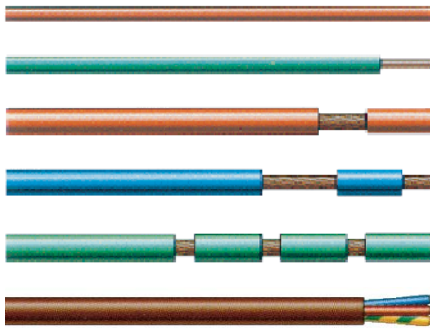


LA PRIMA

Cutting-Stripping

Cod. 10001142



Software PC - La Prima



"LA PRIMA" is a bench automatic machine for processing single-core wire from both sides.

The complete absence of compressed air makes the machine exceedingly quiet and allows it to be used in any working environment.

The system's most important feature is the complete management of all processing parameters: wire size, cutting and stripping length, type of stripping (total, partial or multiple) through the use of an innovative and ergonomic keyboard placed on the control panel. A large display allows the operator to view the data settings.

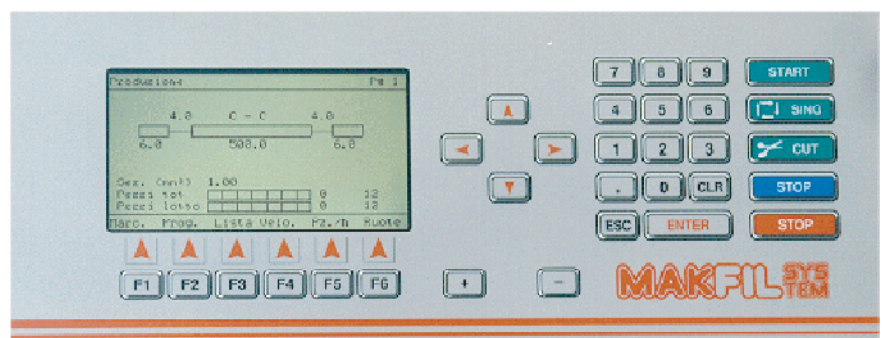
The software has been designed to ensure simple and easy use and to reduce operator learning time to a minimum.

Up to 200 wire processing programs can be stored and selected directly from the keyboard without any mechanical adjustments being required. The machine is specially designed to allow most types of wire to be processed using a single pair of V-shaped blades and assures high-quality cutting, insulation incision and stripping with precision and repeatability.

Other machines, such as cable unwinders, markers and cable collector units, can be connected to automate and complement cable processing.

A user-friendly Windows based software (PC - La Prima) allows the operator to program the complete machine.

The machine learning and use are really quick and immediate.



MAKFIL SYS TEM

TECHNICAL DATA

Processable product



- Cable: single-core
 - Wire strand: from 0.05 to 6 mm² (AWG from 30 to 10)
 - Rigid single copper wire: up to 1.5 mm² (AWG 16)
- External wire diameter: up to 8 mm max. (.32")
 Insulation: PVC, Teflon, silicone, etc.

Processing parameters

- Programmable wire length:
- Normal production: from 55 to 99 m (2.16" to 325ft)
- "Short mode" production: from 1 mm to 54 mm (.04" to 2.15")

Cutting length: from 1 mm to 99 m (.04" to 325 ft)

Stripping length:

- max. 50 mm (1.97") Side1 full and semi pull-off with multiple cuts also 
- max. 40 mm (1.58") Side2 full and semi pull-off with multiple cuts also 

Piece number setting: from 1 to 99,999

Feed speed: 3,500 mm/s max. (138"/sec) (adjustable)

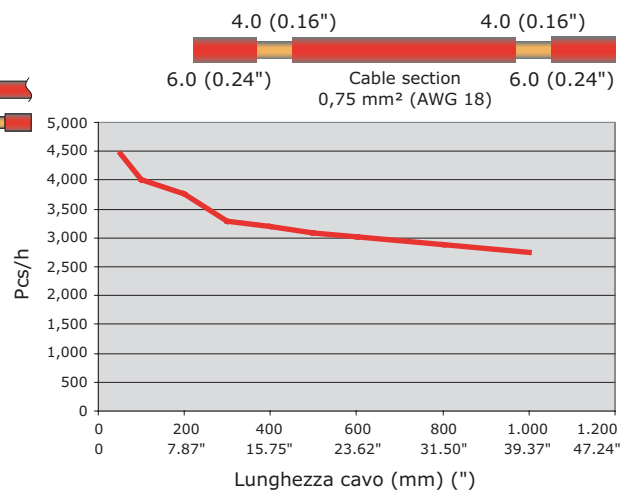
Memory capacity: up to 200 programs

Machine technical characteristics

- Machine control: by microprocessor
- Working parameter settings: using membrane keyboard
- Function viewing: alphanumeric display
- Type of blades: V-shaped (standard)
- Mobile plastic guard with safety switch
- Electrical power supply: 110-220-240V Single phase 50/60 Hz
- Electrical power consumption: 800 VA
- Acoustic pressure: ≤ 50 dB
- Machine dimensions: see layout
- Machine weight: 35 kg (77 lbs) approx.



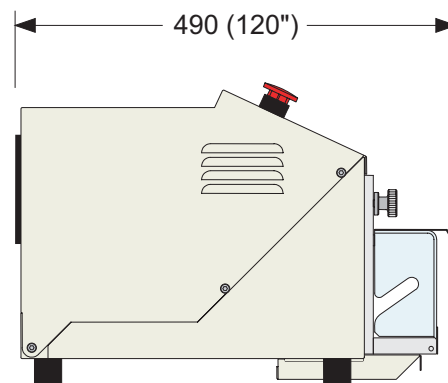
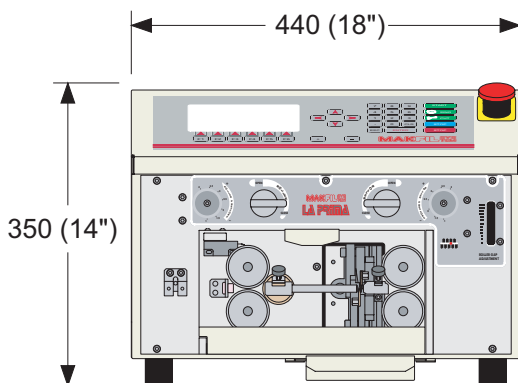
Productivity



T37.06.CF.0608

Optionals

- Wire straightener kit
- Air jet ejection nozzle kit
- Radius blades
- Knurled steel wheels / Rubberizing wheels
- La Prima - P.C. Communication Software



MAKFIL SYSTEM reserves the right to change the data in this catalogue without prior notice

Our agent:

MAKFIL SYSTEM

MAKFIL SYSTEM s.r.l

40016 S.Giorgio di Piano (BO) - Italy

Via dell'Artigiano, 12

TEL. +39-051-893445 - Fax +39-051-893694

Internet <http://www.makfil.it>